

246

MERMAIDS BIGHT

PARK SHORE - NAPLES

DETAILS

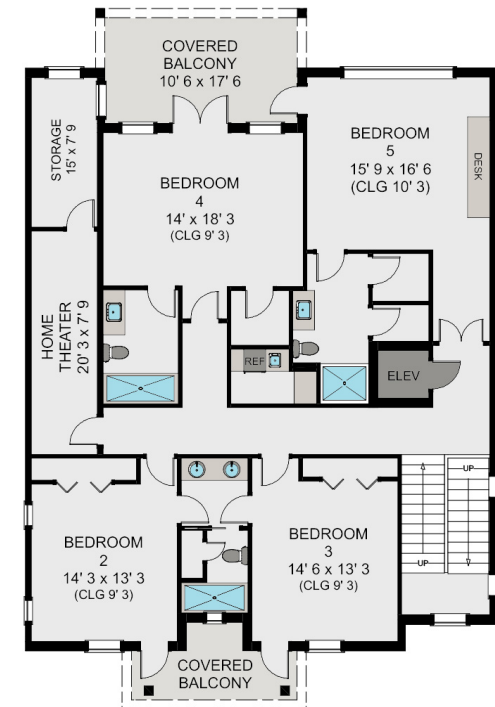
Bedrooms	5 + Den
Bathrooms	4/2
Garage	3
Year Built	2010

LOT DIMENSIONS 82x150x119x15

TOTAL LIVING AREA 5931 sq ft

TOTAL AREA 7994 sq ft

-Eligibility for Park Shore Beach Association
-Eligibility for Venetian Bay Yacht Club Boat Slip



MICHAEL G. LAWLER, PA

239.261.3939
INFO@MICHAELLOWLER.COM
800 HARBOUR DR | NAPLES, FL 34103

MICHAELLOWLER.COM



800 HARBOUR DRIVE, NAPLES, FLORIDA 34103 (239) 261-3939 © 2024 DOUGLAS ELLIMAN REAL ESTATE. ALL MATERIAL PRESENTED HEREIN IS INTENDED FOR INFORMATION PURPOSES ONLY. WHILE, THIS INFORMATION IS BELIEVED TO BE CORRECT, IT IS REPRESENTED SUBJECT TO ERRORS, OMISSIONS, CHANGES OR WITHDRAWAL WITHOUT NOTICE. ALL PROPERTY INFORMATION, INCLUDING, BUT NOT LIMITED TO SQUARE FOOTAGE, ROOM COUNT, NUMBER OF BEDROOMS AND THE SCHOOL DISTRICT IN PROPERTY LISTINGS SHOULD BE VERIFIED BY YOUR OWN ATTORNEY, ARCHITECT OR ZONING EXPERT. EQUAL HOUSING OPPORTUNITY. WE CONSIDER THIS INFORMATION TO BE RELIABLE, BUT BECAUSE IT HAS BEEN SUPPLIED BY THIRD PARTIES, WE CANNOT REPRESENT THAT IT IS ACCURATE, COMPLETE, OR THE MOST RECENT INFORMATION AND IT SHOULD NOT BE RELIED

HARBOUR POINT BUSINESS CENTER
239.261.3939 | 800 HARBOUR DR | NAPLES, FL 34103

